

METAL TRANSFER

Trough Systems - TURNKEY LAUNDER SYSTEMS



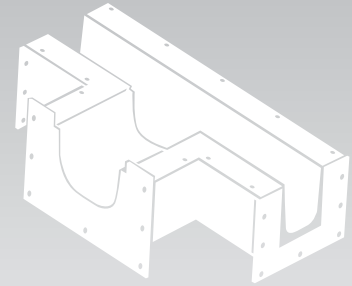
Description:

RODABELL-PERMATECH troughing systems are designed to transport molten aluminum along the casting line. Our Aluminum launder systems are custom made for each client. Designs vary depending on casting house layouts and casting parameters.

Our launder systems have precast refractory sections made out of fused silica. This innovative material was developed by PERMATECH to provide the best performance and to last longer than any other material. PERMATECH is the pioneer in developing precast refractory shapes.

RODABELL provides the turnkey launder system project management which includes:

- Custom measuring and data collection on-site
- Ground supports and launder metal shell fabrication
- Isolation and ceramic kit installation
- Launder system assembly
- Start-up support



Application:

Fused Silica launders for molten aluminum transport applications

Maximum service Temperature: **1204°C.**

Advantages:

- Great mechanical resistance that provides an extended lifetime
- Smooth transition from one profile to another
- Customized steelwork and refractory

Sigma 2SL Series Composition

| Description | % |
|-----------------------------------|-------|
| Fused silica | 75-90 |
| Modifier | 5-15 |
| Calcium Aluminate | 5-10 |
| Amorphous silica | 3-10 |
| Crystalline silica (cristobalite) | <0.7 |